

ECOHAB – LTU

Lovisa Sjöstedt Ph.D. Student

Supervisors: Gunnar Hellström, Anders Andersson &
Patrik Andreasson (VRD)

Div. of Fluid and Experimental Mechanics
Luleå University of Technology

Collaboration with SLU, UMU, KAU



ECOHAB general

- Improvement and evaluation of connectivity and habitat quality for sustainable hydropower
 - The purpose is to develop and evaluate measures for regulated rivers that increase biodiversity and improve connectedness within catchments while maintaining hydropower production.



Energiforsk



Energimyndigheten

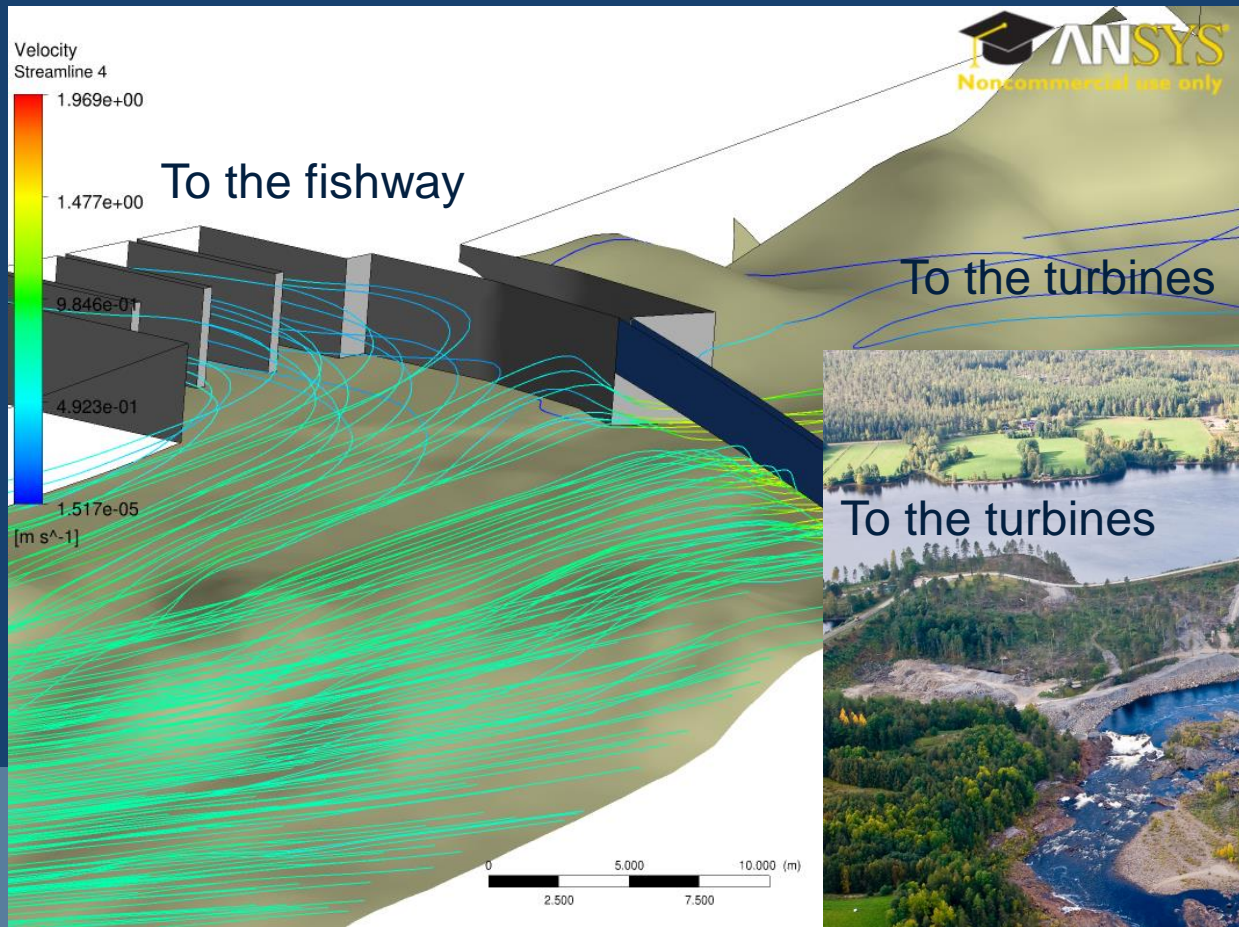
Swedish Agency
for Marine and
Water Management



Fishways

- Hydraulic preferences regarding fishways and
Why do some fishways work as expected and others not?

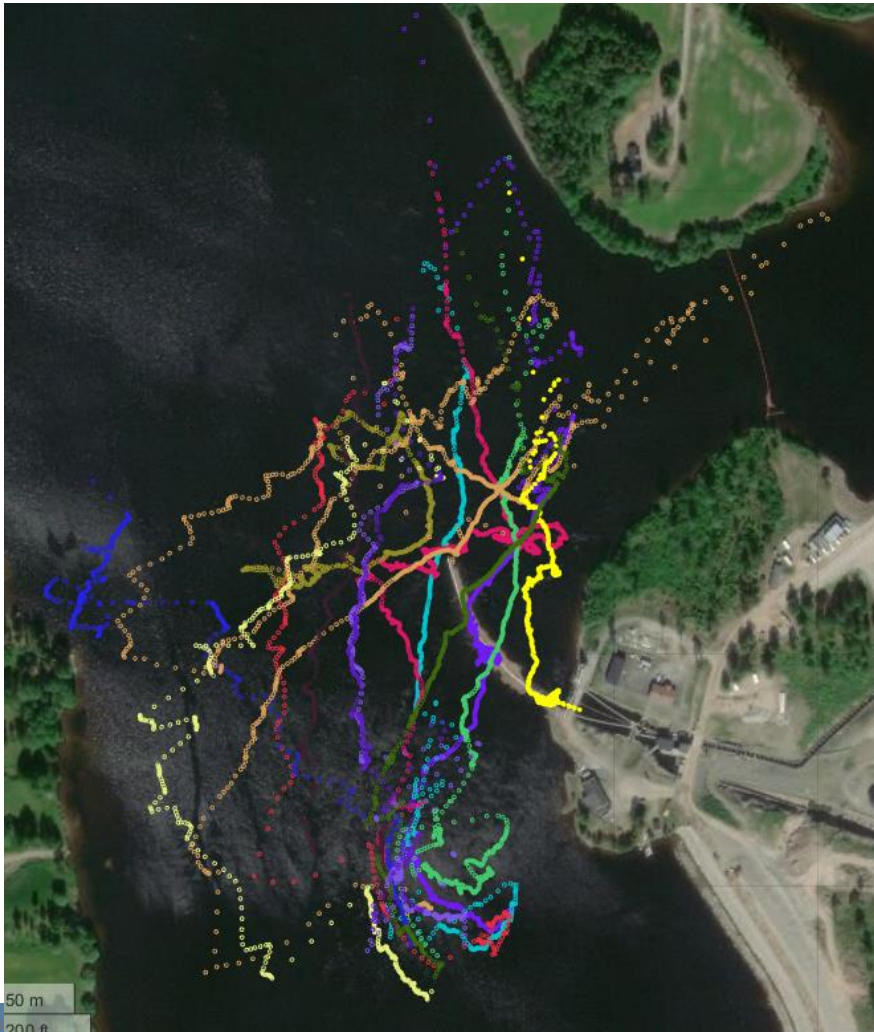
Fish behaviour Stornorrfors HPP, Umeälven



Stornorrfors, downstream

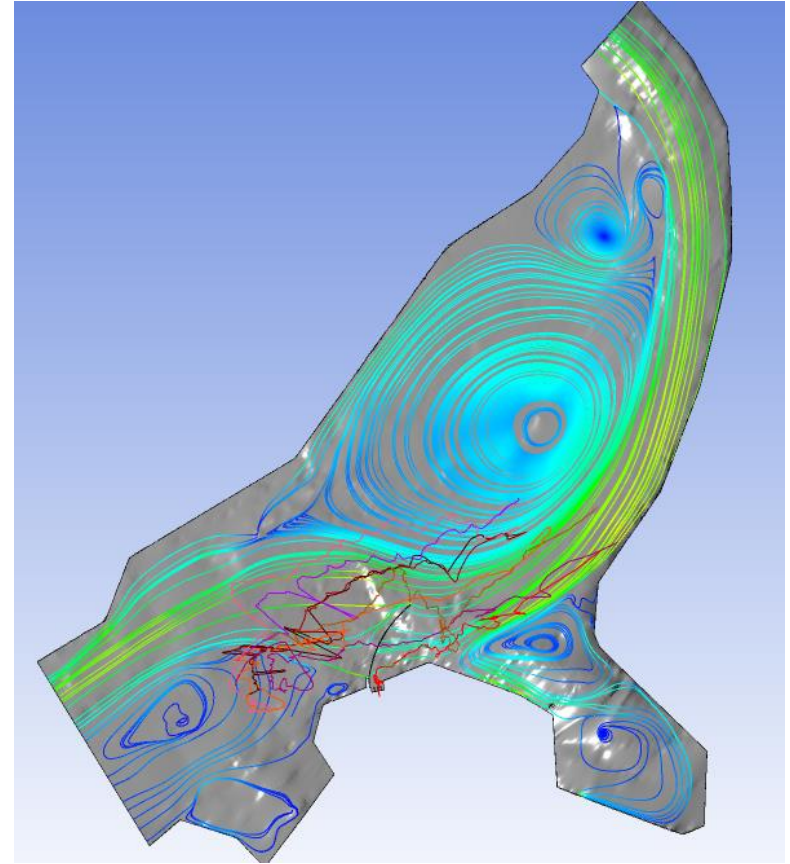


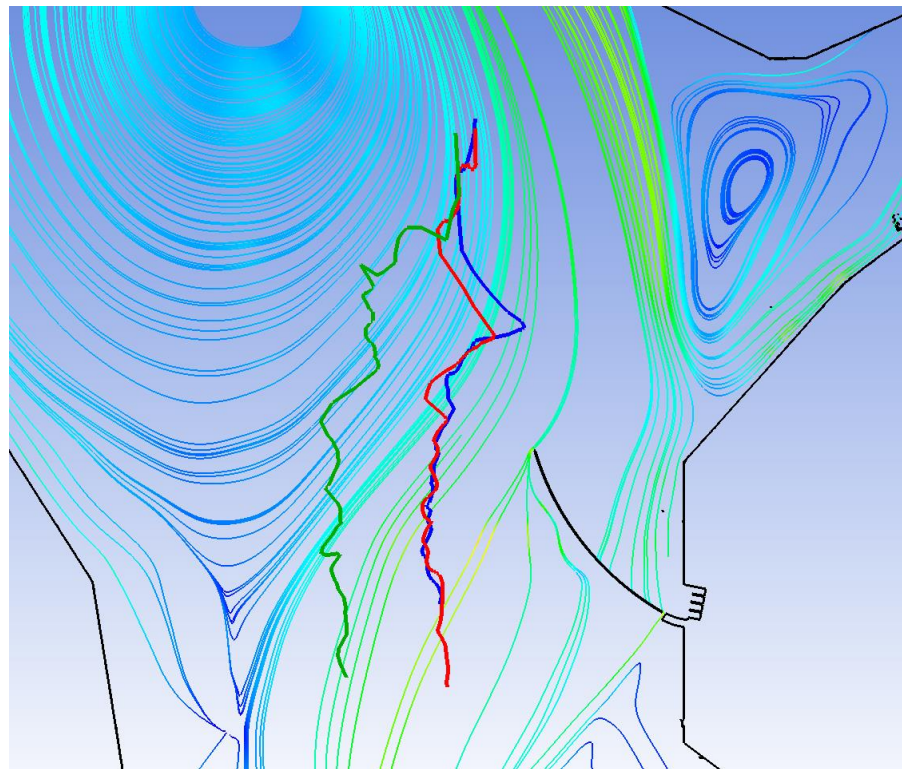
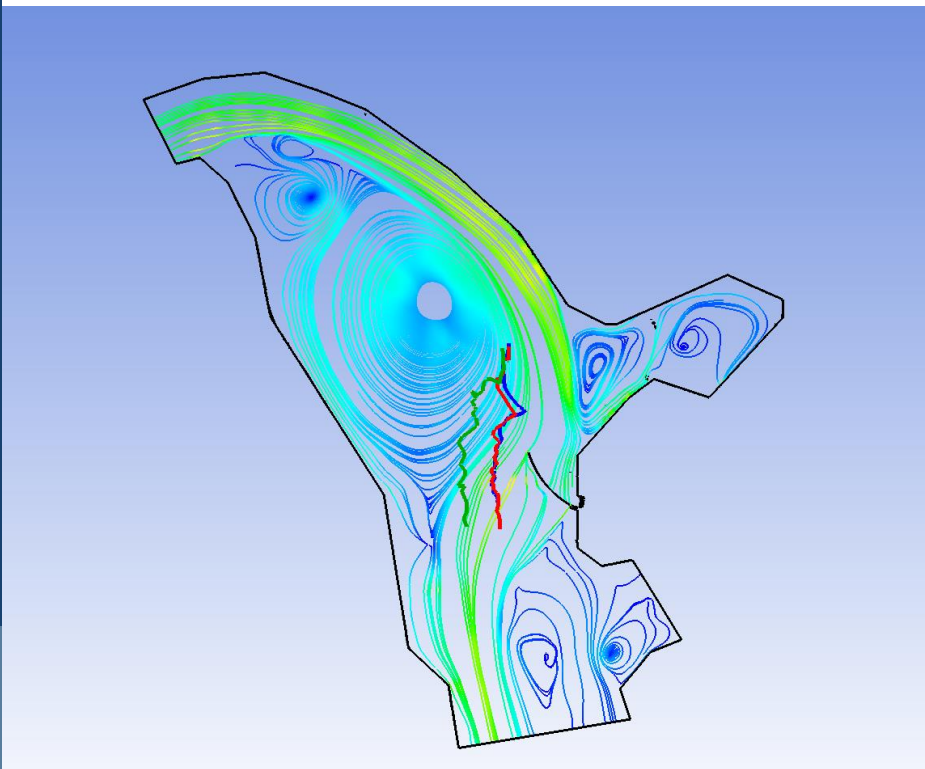
HR-AT from Johan Leander
PhD project, UMU, SLU &
VRD

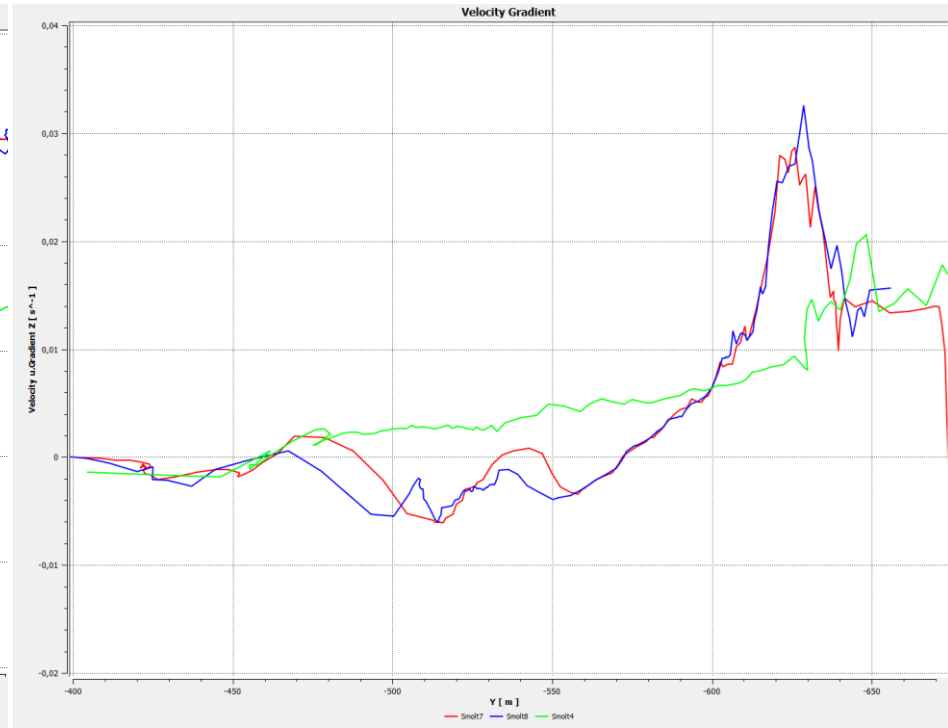
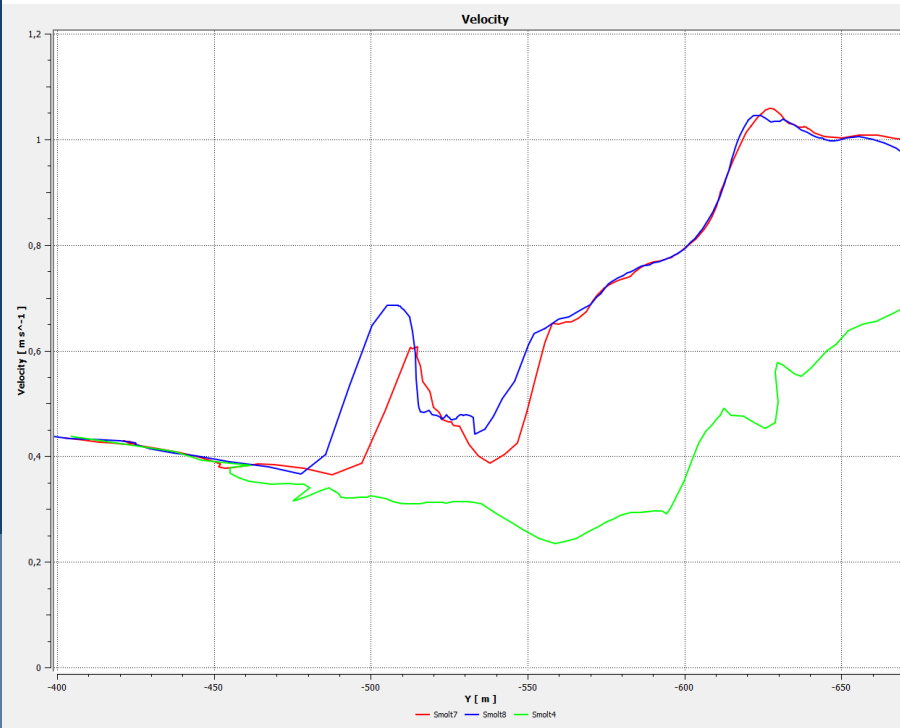


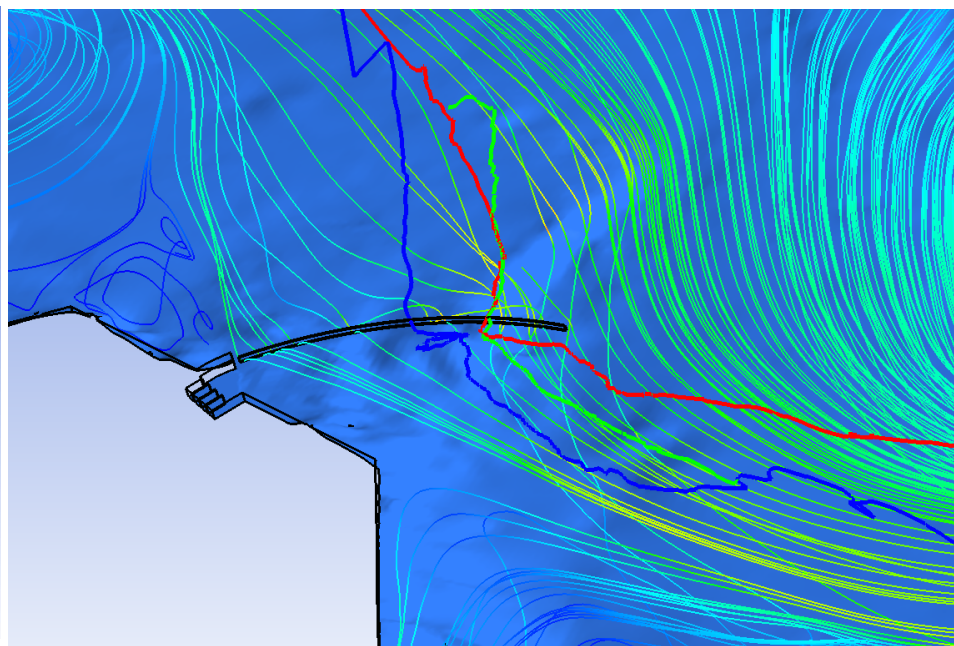
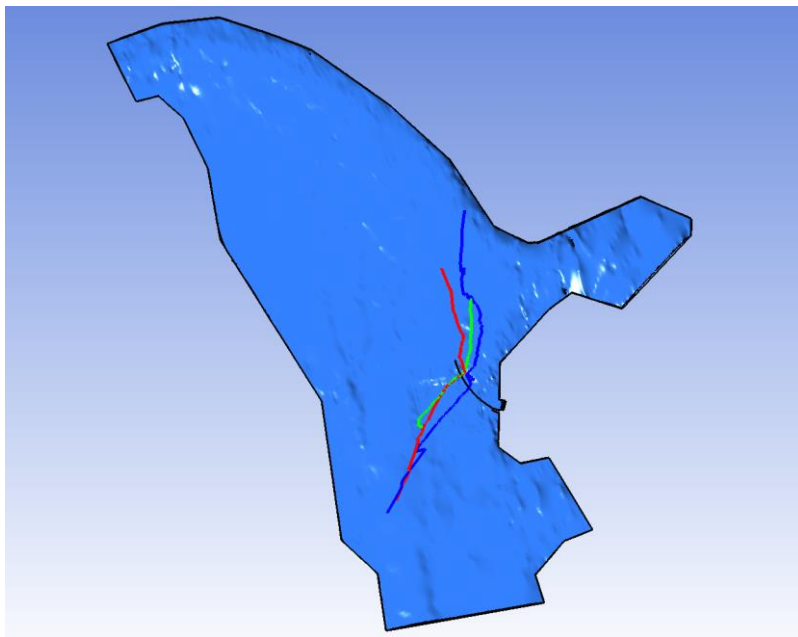
HR-AT combined with CFD

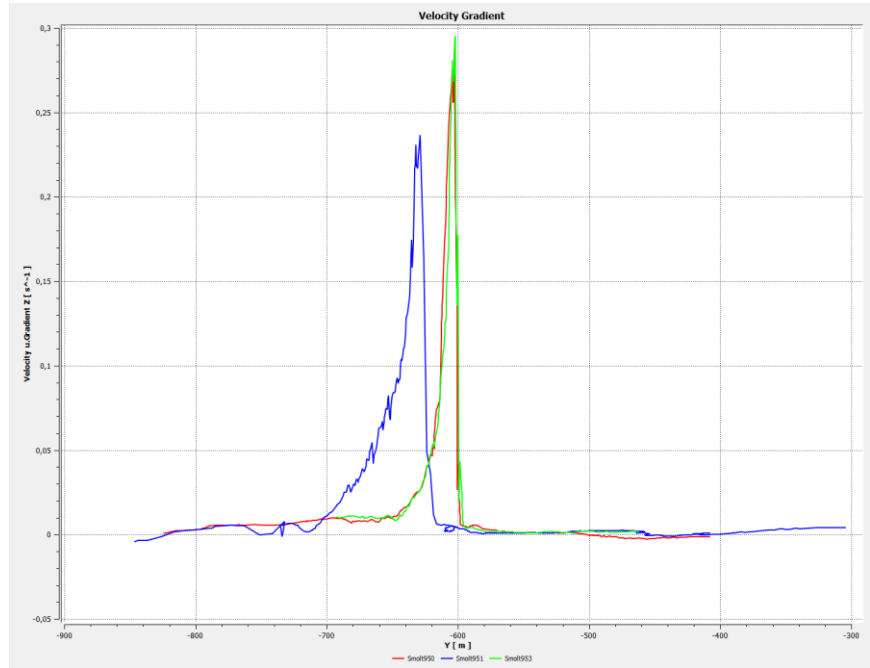
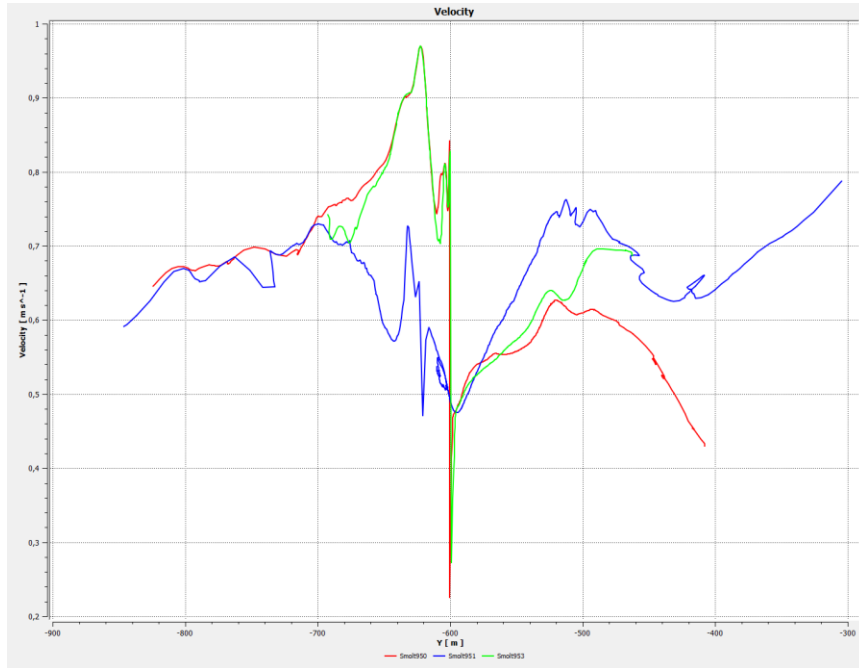
- Comparison between hydraulic parameters and individual fishtracks
- Smolt
- Kelt
- Develop behaviour rules











So far and what is next?

- Smolt
- Kelt
- Confluence

Thank you for the attention

Questions

?



Energiforsk



Energimyndigheten

Swedish Agency
for Marine and
Water Management



LULEÅ
TEKNISKA
UNIVERSITET



VATTENFALL 

LULEÅ
UNIVERSITY
OF TECHNOLOGY

